

HEYYY BRICK

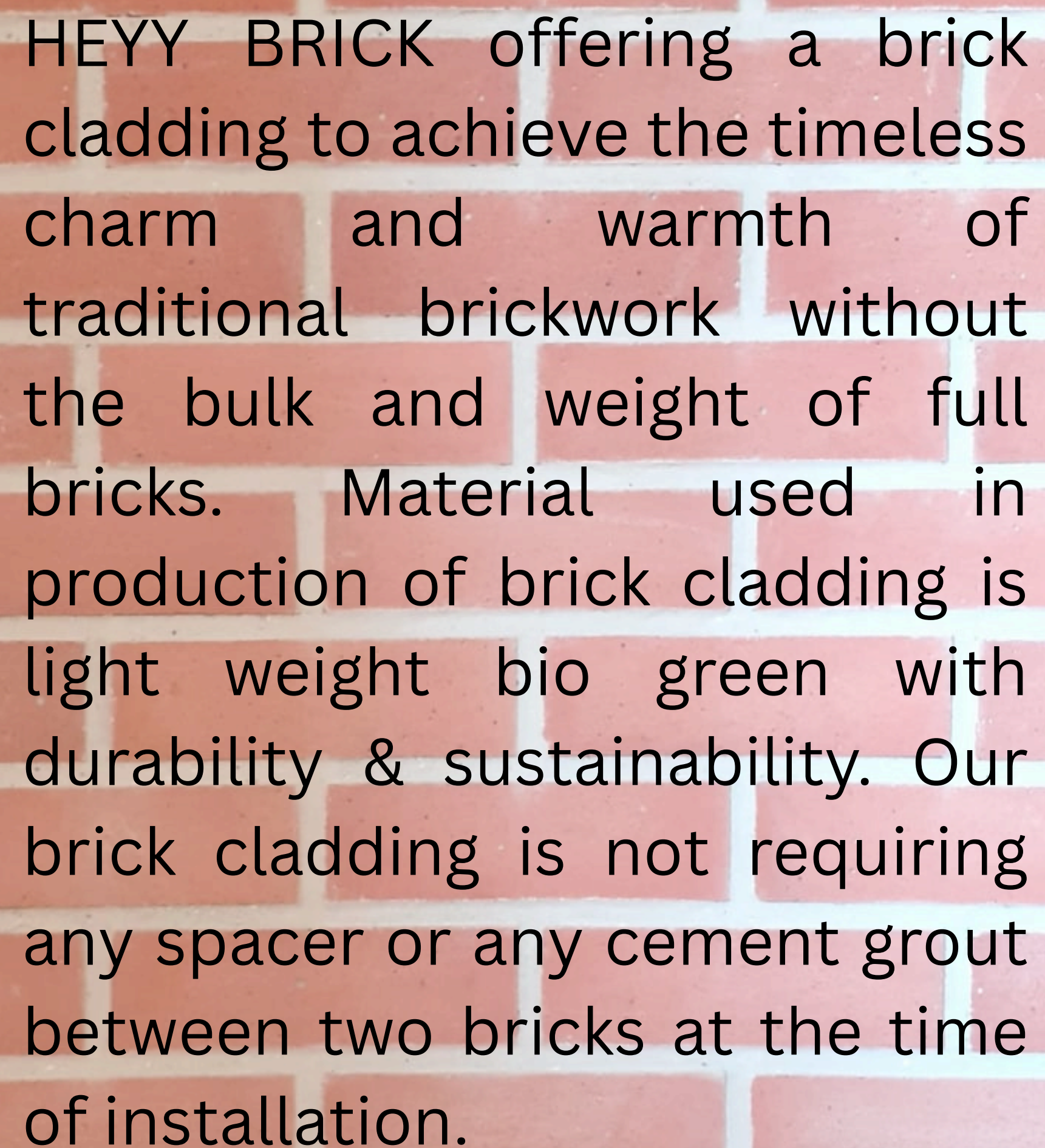


Welcome to HEYY BRICK

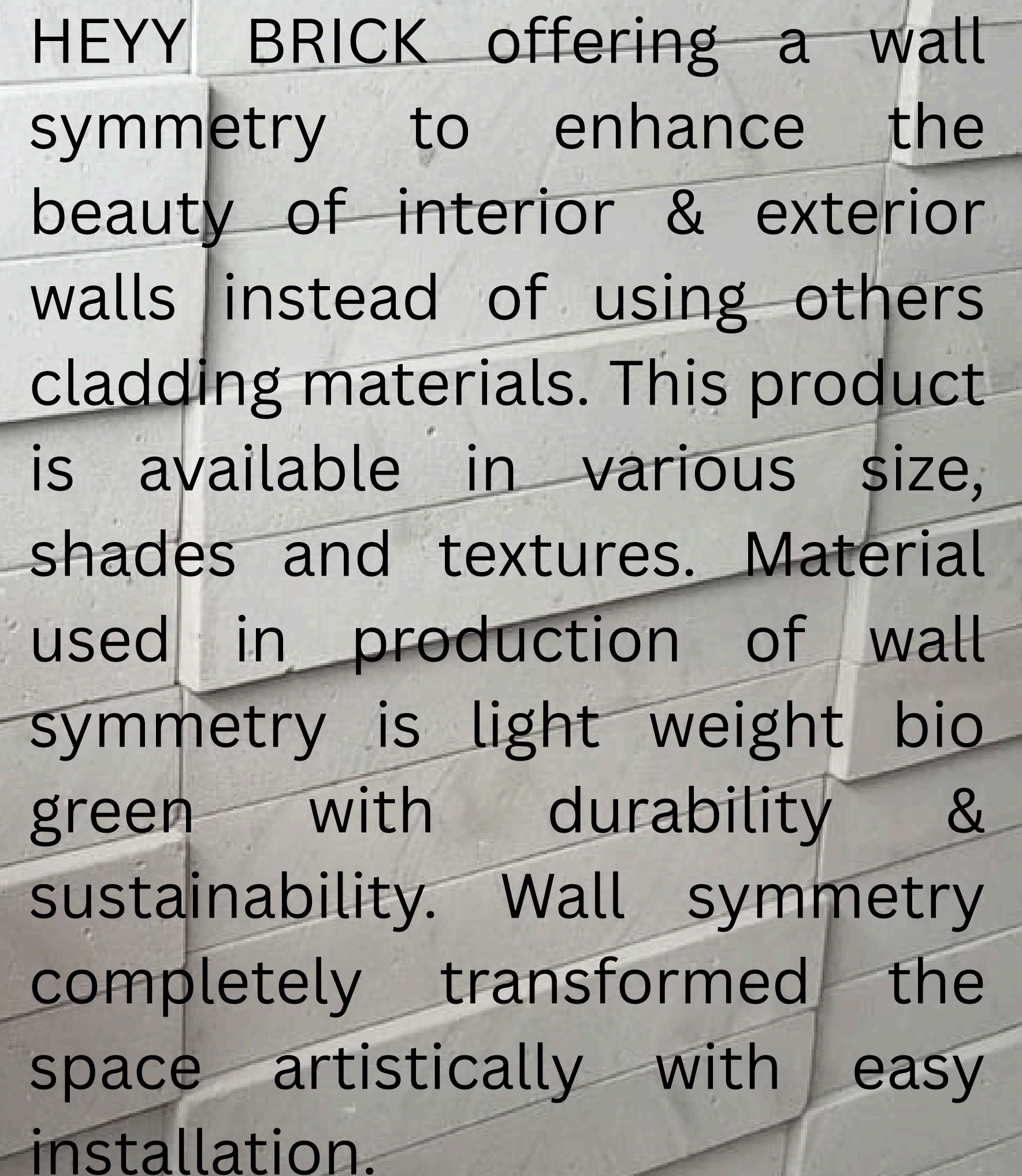
From last three decades we are engaged in Green building materials to provide durable & sustainable products to Human society. When we thought about bricks, everyone know it is a just raw material for building wall partition. But we are change this thought by introducing HEYY BRICK in the market which means brick is a artistic creation for enhance the beauty of interior & exterior walls, elevations of houses, cafes, offices & projects. By using products of HEYY BRICK anyone can transform the space artistically.

All products of HEYY BRICK are produced under recommendation of Green India Clean India concept of I. G. F. with comply the requirements of ISO 9001:2015 & ISO 14001:2015. For requirement of this concept, we are using BBP Technology with bio & environment friendly raw material to save time & energy & minimizing the uses of natural resources.

Today our products of HEYY BRICK are very successful in demand due to long durability & sustainability with aesthetic look and modernity.

A close-up photograph of a wall covered in red brick cladding. The bricks are arranged in a traditional running bond pattern, with light-colored mortar visible between them. The text is overlaid on the left side of the image.

HEY Y BRICK offering a brick cladding to achieve the timeless charm and warmth of traditional brickwork without the bulk and weight of full bricks. Material used in production of brick cladding is light weight bio green with durability & sustainability. Our brick cladding is not requiring any spacer or any cement grout between two bricks at the time of installation.

A close-up photograph of a wall covered in grey wall symmetry cladding. The cladding consists of rectangular panels with a 3D, interlocking design that creates a symmetrical pattern. The text is overlaid on the right side of the image.

HEY Y BRICK offering a wall symmetry to enhance the beauty of interior & exterior walls instead of using others cladding materials. This product is available in various size, shades and textures. Material used in production of wall symmetry is light weight bio green with durability & sustainability. Wall symmetry completely transformed the space artistically with easy installation.

Why Choose Us



Easy to apply

We are offering a fantastic way to achieve the timeless charm with light weight material by easy installation.



Vintage look with modernity

In the real mean of interior and exterior design, the fusion of vintage aesthetics with modern functionality has become a hallmark of sophisticated and unique spaces.



Durable & Sustainable

We are offering a remarkable combination of durability and sustainability, making them an ideal choice for both aesthetic and Eco conscious projects.

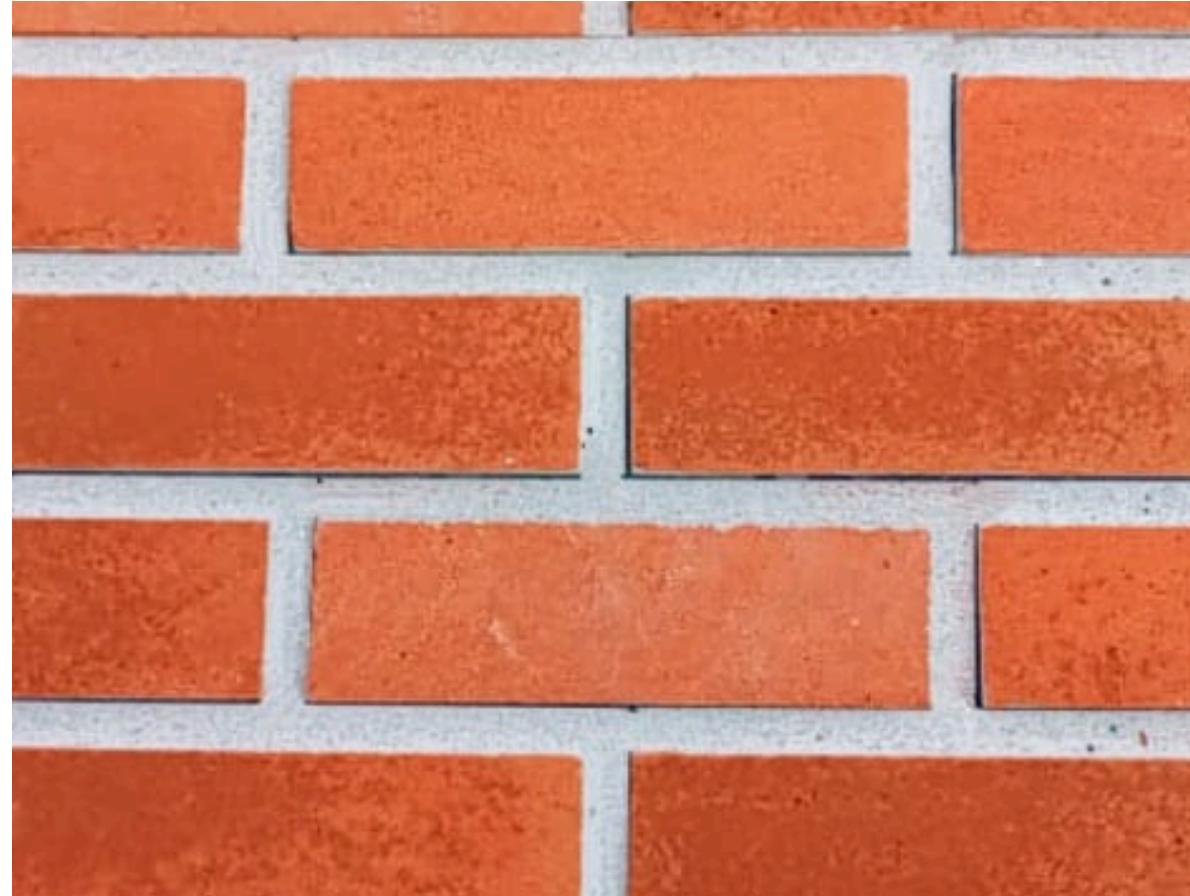


Good thermal conductivity

When it comes to building materials, especially those used in exterior walls, thermal conductivity is a crucial factor to consider.

Our Offering

Natural Terracotta



Material: Bio Green

Texture: Semi Ruff

Density: 600 to 800 Kg / M cube

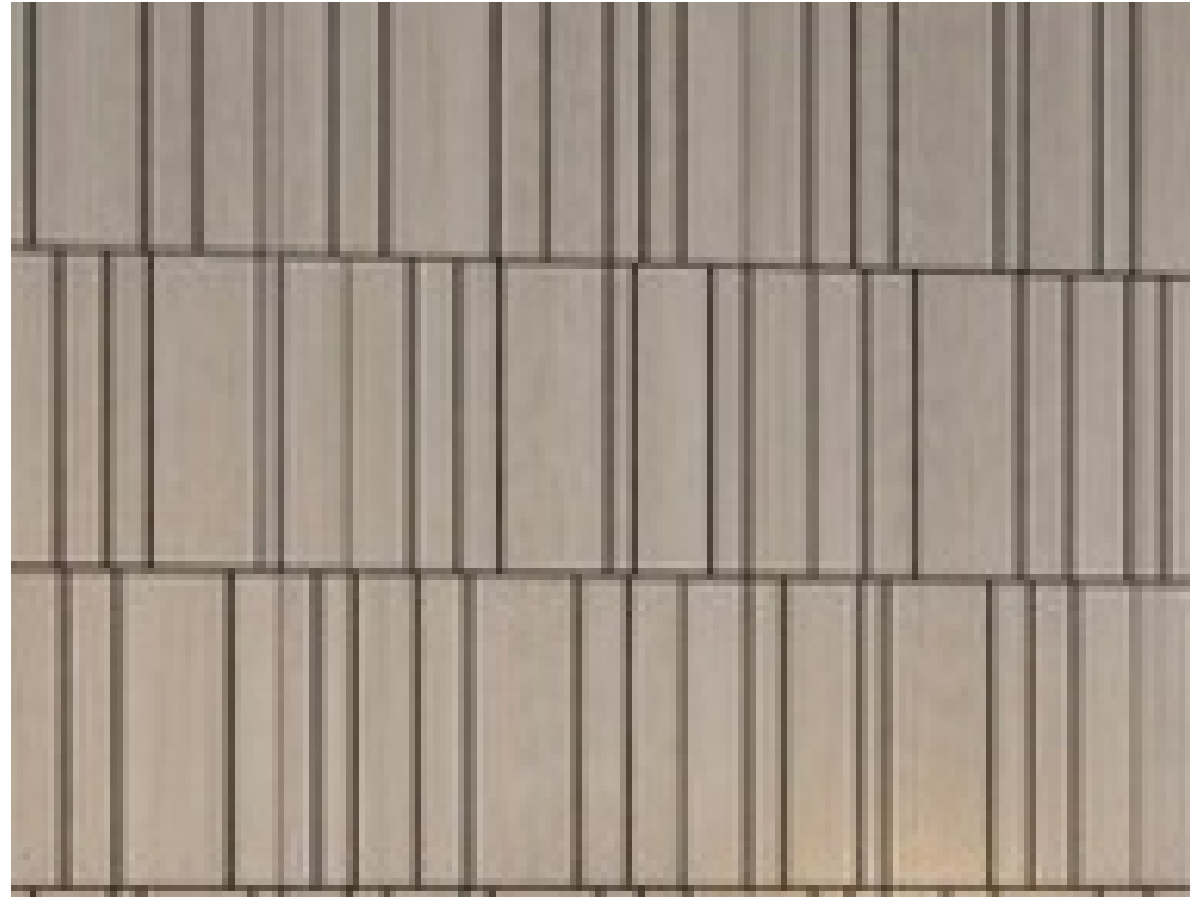
Available Size: 100 x 300 x 20 mm,
100 x 600 x 20 mm,
75 x 240 x 20 mm,
50 x 240 x 20 mm

Resistance: Weather & Fire

Packaging Size: 10 Sq. ft



WS 2.0



Material: Bio Green

Texture: Semi Ruff

Density: 600 to 800 Kg / M cube

Resistance: Weather & Fire

Available Size: 50 x 600 x 40 mm, to
150 x 600 x 40 mm,



Burn Brown



Material: Bio Green

Texture: Semi Ruff

Density: 600 to 800 Kg / M cube

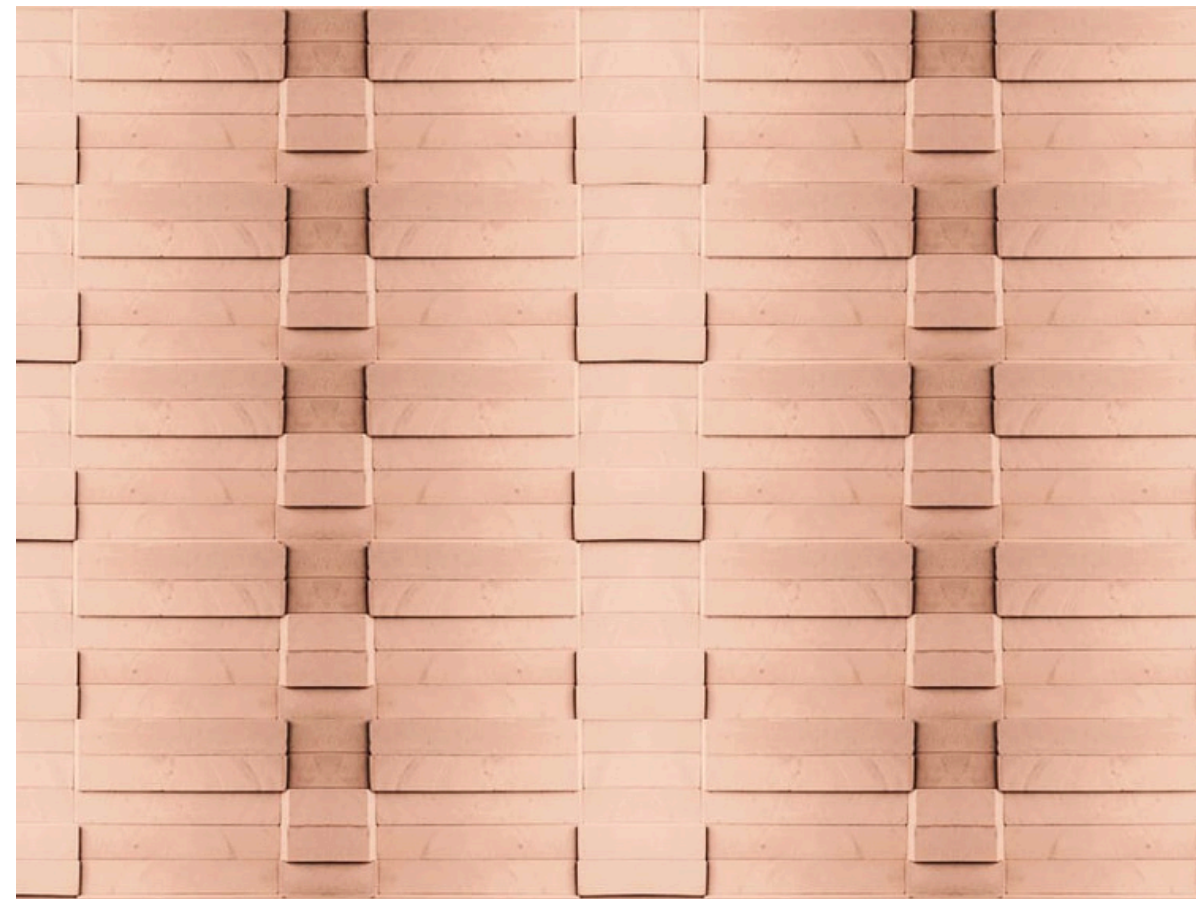
Available Size: 100 x 300 x 20 mm,
100 x 600 x 20 mm,
75 x 240 x 20 mm,
50 x 240 x 20 mm

Resistance: Weather & Fire

Packaging Size: 10 Sq. ft



WS 3.0



Material: Bio Green

Texture: Semi Ruff

Density: 600 to 800 Kg / M cube

Resistance: Weather & Fire

Available Size: 150 x 600 x 40 mm



Textural Pink



Material: Bio Green

Texture: Semi Ruff

Density: 600 to 800 Kg / M cube

Available Size: 100 x 300 x 20 mm,
100 x 600 x 20 mm,
75 x 240 x 20 mm,
50 x 240 x 20 mm

Resistance: Weather & Fire

Packaging Size: 10 Sq. ft



WS 4.0



Material: Bio Green

Texture: Semi Ruff

Density: 600 to 800 Kg / M cube

Resistance: Weather & Fire

Available Size: 150 x 600 x 40 mm



Textural Yellow



Material: Bio Green

Texture: Semi Ruff

Density: 600 to 800 Kg / M cube

Available Size: 100 x 300 x 20 mm,
100 x 600 x 20 mm,
75 x 240 x 20 mm,
50 x 240 x 20 mm

Resistance: Weather & Fire

Packaging Size: 10 Sq. ft



WS 5.0



Material: Bio Green

Texture: Semi Ruff

Density: 600 to 800 Kg / M cube

Resistance: Weather & Fire

Available Size: 150 x 600 x 40 mm



Milky Moon



Material: Bio Green

Texture: Semi Ruff

Density: 600 to 800 Kg / M cube

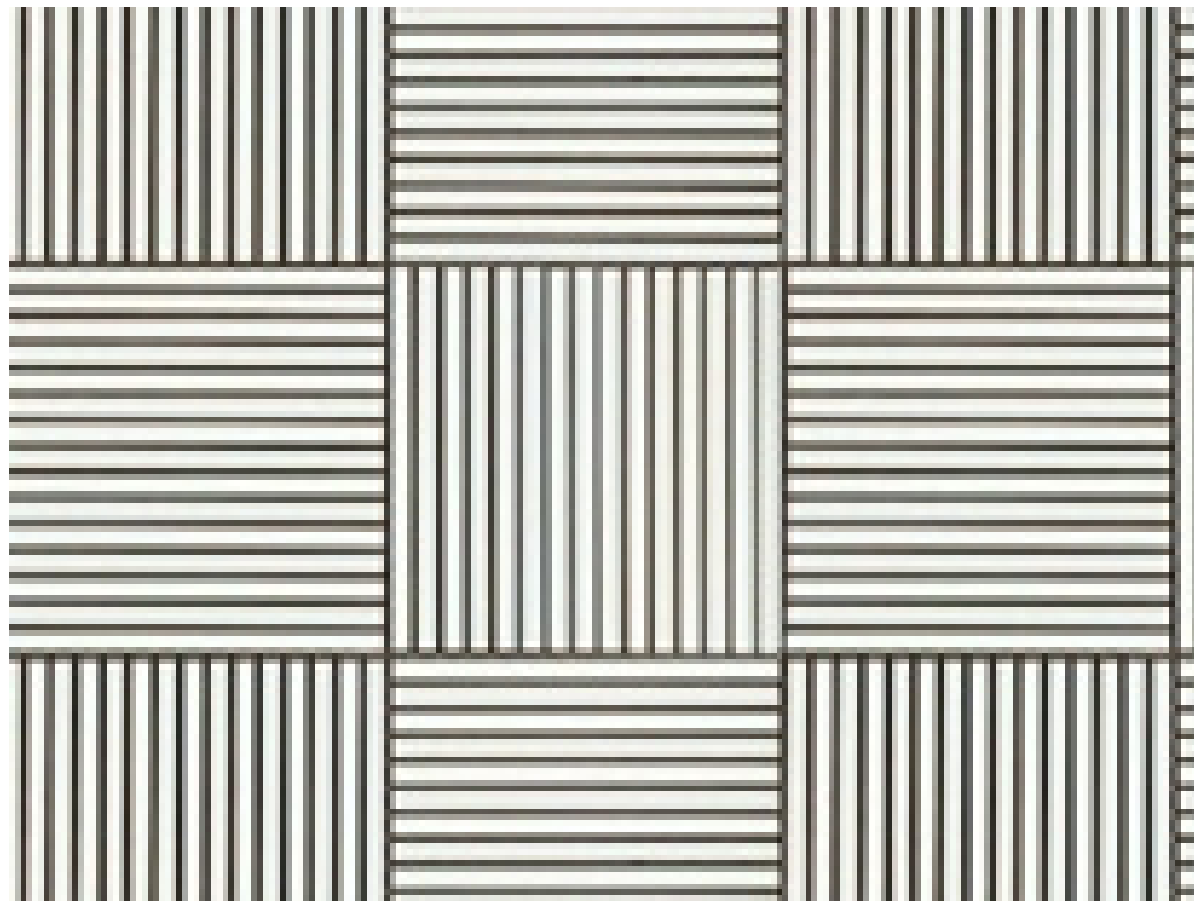
Available Size: 100 x 300 x 20 mm,
100 x 600 x 20 mm,
75 x 240 x 20 mm,
50 x 240 x 20 mm

Resistance: Weather & Fire

Packaging Size: 10 Sq. ft



WS 6.0



Material: Bio Green

Texture: Semi Ruff

Density: 600 to 800 Kg / M cube

Resistance: Weather & Fire

Available Size: 50 x 600 x 40 mm, to
150 x 600 x 40 mm,



Raw Natural



Material: Bio Green

Texture: Semi Ruff

Density: 600 to 800 Kg / M cube

Available Size: 100 x 300 x 20 mm,
100 x 600 x 20 mm,
75 x 240 x 20 mm,
50 x 240 x 20 mm

Resistance: Weather & Fire

Packaging Size: 10 Sq. ft



WS 7.0



Material: Bio Green

Texture: Semi Ruff

Density: 600 to 800 Kg / M cube

Resistance: Weather & Fire

Available Size: 150 x 600 x 40 mm

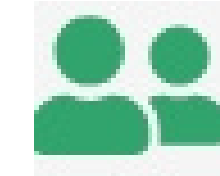


Our Achievements



30+

Years in business



42

Top specialists



150+

Completed projects



23

Industry awards



HEY Y BRICK

Contact

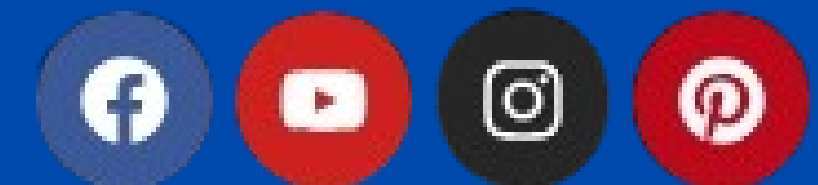
9503872236

9021463694

Email –info@heybrick.com

Email –sales@heybrick.com

Website – www.heybrick.com



Vision Plus, Bhakti – Shakti Chowk, Mumbai – Pune Highway , Nigdhi, Pcmc, Pune 411044.